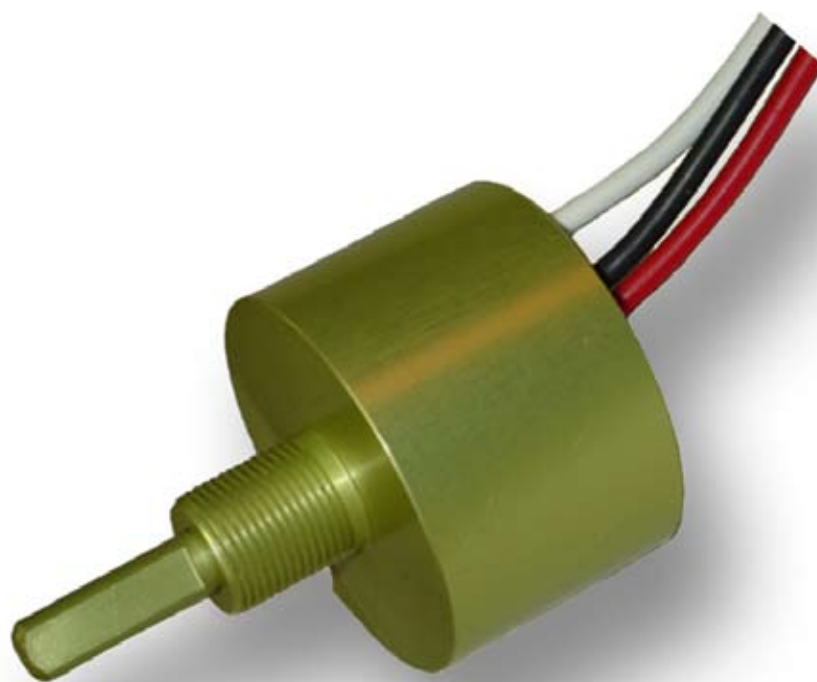
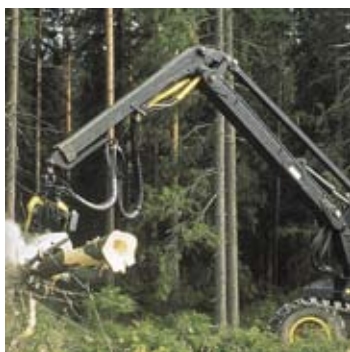




aerospace
climate control
electromechanical
filtration
fluid & gas handling
hydraulics
pneumatics
process control
sealing & shielding



Electronic Control Systems Sensors

RF50 Rotary Friction Sensor



ENGINEERING YOUR SUCCESS.

Application

The RF50 rotary control belongs to the Parker family of accessories provided to complement electronic control systems. The RF50 is a 0-5V output, non-contact rotary control for mobile hydraulic applications. The RF50 has twelve inch leads and an attached Deutsch connector. To make the control suitable for mobile equipment, we have focused upon properties such as reliability, electromagnetic immunity and ease of installation.

Properties

Reliability

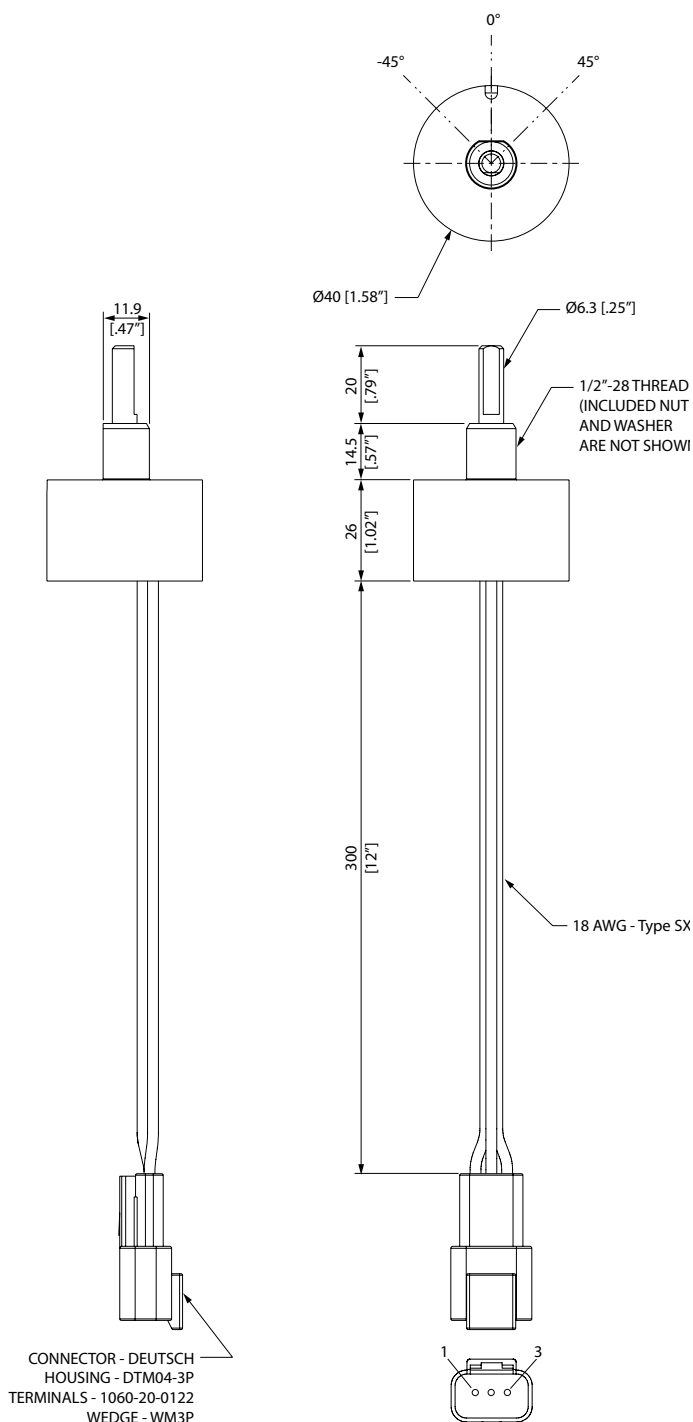
The RF50 has anodized aluminum construction for strength and corrosion resistance. The control uses non-contact, Hall-effect technology for trouble free operation. The control is very robust and able to withstand rugged applications.

Electromagnetic immunity

The RF50 has a high level of EMI protection.

Installation

The RF50 is well suited for the mobile hydraulics industry. The 3 pin connector is a sealed Deutsch type designed for automotive use. This connector combined with potted electronics gives the control IP66 protection for exposed outdoor applications. The locating flat on the threads provides for easy alignment. The mounting nut and washer are supplied. These features provide for easy installation and removal, even in field conditions.



General

Weight	77 g
Temperature range	-40°C to 125°C
Operating life	1 million cycles
Total accuracy	Max 4.0 % FS
Hysteresis	<1.0%

Mechanical characteristics

Angular travel	150°
Connector	Deutsch DTM

Electrical specifications

Working angle	90°
Supply Voltage(Vs)	5.0+/-10% Vdc
Current supply	Max 12.0 mA
Output at +45° ¹⁾	4.5 V
Output at 0° ¹⁾	2.5 V
Output at -45° ¹⁾	0.5 V
Output current	Max. 1.0 mA

1) The output is ratiometric to supply voltage (Vs)

Ordering part number

RF50	01705
------	-------

Environmental protection

EMI

ISO 11452-2	150 V/m
-------------	---------

ESD

EN 61000-4-2	7 kV
--------------	------

Mechanical

Shock	1m drop
Vibration	30 Gs

Climate

Sealing (electronics)	IP66
-----------------------	------

Chemical environment

Liquids (resistance)	standard automotive
----------------------	---------------------



WARNING - USER RESPONSIBILITY

FAILURE OR IMPROPER SELECTION OR IMPROPER USE OF THE PRODUCTS DESCRIBED HEREIN OR RELATED ITEMS CAN CAUSE DEATH, PERSONAL INJURY AND PROPERTY DAMAGE.

- This document and other information from Parker-Hannifin Corporation, its subsidiaries and authorized distributors provide product or system options for further investigation by users having technical expertise.
- The user, through its own analysis and testing, is solely responsible for making the final selection of the system and components and assuring that all performance, endurance, maintenance, safety and warning requirements of the application are met. The user must analyze all aspects of the application, follow applicable industry standards, and follow the information concerning the product in the current product catalog and in any other materials provided from Parker or its subsidiaries or authorized distributors.
- To the extent that Parker or its subsidiaries or authorized distributors provide component or system options based upon data or specifications provided by the user, the user is responsible for determining that such data and specifications are suitable and sufficient for all applications and reasonably foreseeable uses of the components or systems.

OFFER OF SALE

Please contact your Parker representative for a detailed "Offer of Sale".

Sales Offices Worldwide

North America

Hydraulics Group Headquarters

6035 Parkland Boulevard
Cleveland, OH 44124-4141 USA
Tel: 216-896-3000
Fax: 216-896-4031

Parker Hannifin Canada

Motion & Control Division – Milton

160 Chisholm Drive Milton
Ontario Canada L9T 3G9
Tel: 905-693-3000
Fax: 905-876-1958

Mexico

Parker Hannifin de México

Av eje uno norte num 100
Parque Industrial Toluca 2000
Toluca, Mex C.P. 50100
Tel: 52 722 2754200
Fax: 52 722 2799308

Europe

Europe Hydraulics Group

Parker Hannifin Corporation

Parker House
55 Maylands Avenue
Hemel Hempstead, Herts
HP2 4SJ England
Tel: 44 1442 458000
Fax: 44 1442 458085

Latin America

Brazil

Hydraulics Division

Parker Hannifin Ind. e Com. Ltda

Av. FredericoRitter, 1100
Cachoeirinha RS, 94930-000 Brazil
Tel: 55 51 3470 9144
Fax: 55 51 3470 3100

Mobile Sales

Mobile Sales Organization and Global Sales

595 Schelter Road
Suite 100
Lincolnshire, IL 60069 USA
Tel: 847-821-1500
Fax: 847-821-7600

Industrial Sales

Great Lakes Region

3700 Embassy Parkway
Suite 260
Fairlawn, OH 44333 USA
Tel: 330-670-2680
Fax: 330-670-2681

Southern Region

1225 Old Alpharetta Road
Suite 290
Alpharetta, GA 30005 USA
Tel: 770-619-9767
Fax: 770-619-9806

Chicago Region

1163 E. Ogden Avenue
Suite 705, #358
Naperville, IL 60563 USA
Tel: 630-964-0796
Fax: 866-473-9274

Pacific Region

8460 Kass Drive
Buena Park, CA 90621
Tel: 714-228-2510
Fax: 714-228-2511

Eastern Region

100 Corporate Drive
Lebanon, NJ 08833 USA
Tel: 908-236-4121
Fax: 908-236-4146

Asia Pacific

Asia Pacific Headquarters

Parker Hannifin Hong Kong Ltd

8/F, Kin Yip Plaza
9 Cheung Yee Street
HK-Cheung Sha Wan, Hong Kong
Tel: 852 2428 8008
Fax: 852 2425 6896

Australia Headquarters

Parker Hannifin Pty Ltd.

9 Carrington Road
Castle Hill, NSW 2154, Australia
Tel: 612 9634 7777
Fax: 612 9842 5111

China Headquarters

Parker Hannifin Motion & Control (Shanghai) Co., Ltd

280 Yunqiao Road,
Jin Qiao Export Processing Zone
CN-Shanghai 201206, China
Tel: 86 21 5031 2525
Fax: 86 21 5834 3714

Korea Headquarters

Parker Hannifin Korea Ltd

6F Daehwa Plaza
169 Samsung-dong, Gangnam-gu
KR-Seoul, 135-090, Korea
Tel: 82 2 559 0400
Fax: 82 2 556 8187

South Africa

Parker Hannifin Africa Pty Ltd

Parker Place

10 Berne Avenue Airport
P.O. Box 1153
ZA-Kempton Park 1620,
Republic of South Africa
Tel: 27 11 961 0700
Fax: 27 11 392 7213





aerospace
climate control
electromechanical
filtration
fluid & gas handling
hydraulics
pneumatics
process control
sealing & shielding



Electronic Control Systems Sensors

RS70 Rotary Sensor



ENGINEERING YOUR SUCCESS.

Application

The RS70 rotary sensor belongs to the Parker family of accessories provided to complement electronic control systems. The RS70 is a 0-5V, dual output, non-contact rotary sensor for mobile hydraulic applications. The sensor has twelve inch leads and an attached Deutsch connector. To make the sensor suitable for mobile equipment, we have focused upon properties such as reliability, electromagnetic immunity and ease of installation.

Properties

Reliability

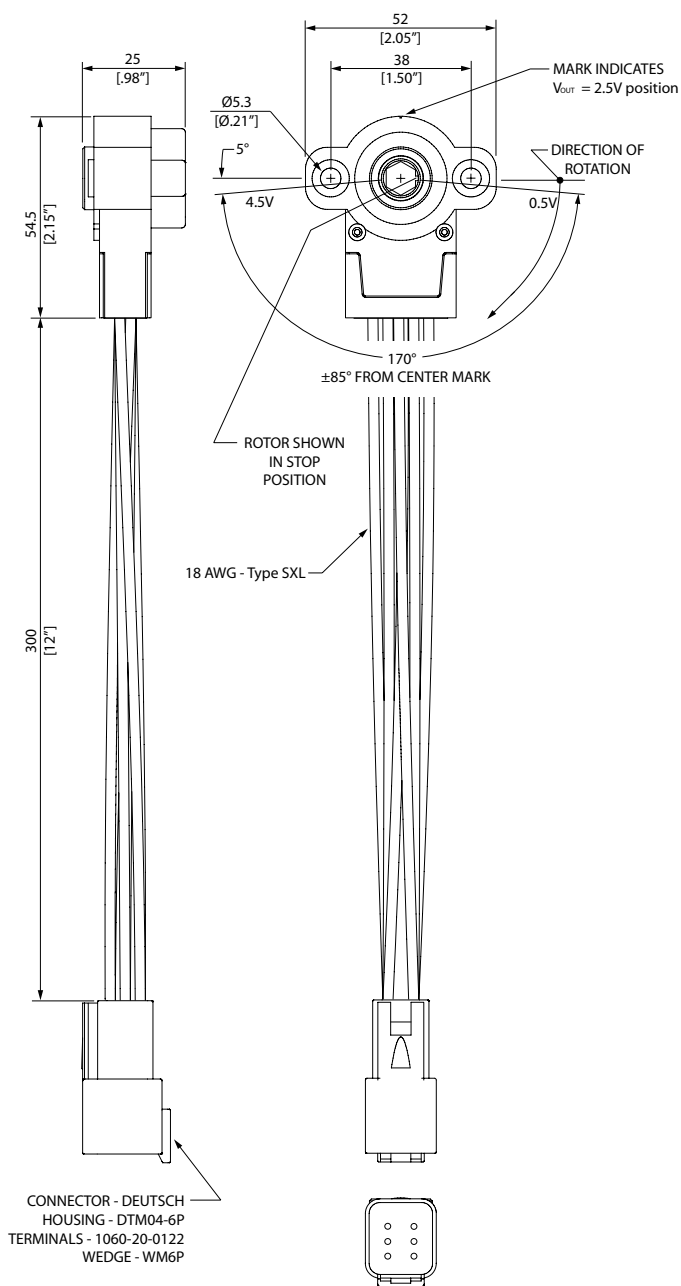
The RS70 has a glass-filled nylon plastic construction for sturdiness and corrosion resistance. The mounting holes are reinforced with brass inserts for added strength. The sensor uses non-contact, Hall-effect technology for trouble free operation. The second output makes this sensor very reliable and adds redundancy. The sensor is very robust and able to withstand rugged applications.

Electromagnetic immunity

The design of the RS70 has a high level of EMI protection.

Installation

The RS70 is well designed for the mobile hydraulics industry. The 6 pin connector is a sealed Deutsch DTM type designed for automotive use. This connector combined with potted electronics gives the sensor IP66 protection for exposed outdoor applications. The mounting holes are extra large for easy alignment. Two roll pins may be used to provide accurate positioning. These features provide for easy installation and removal, even in field conditions.



General

Weight	118 g
Temperature range	-40°C to 125°C
Operating life	10 million cycles
Total error ($\leq 170^\circ$) ¹⁾	Max 3.0 % FS
Hysteresis	1.0% when no shaft end float is allowed

1) Total accuracy includes non-linearity, hysteresis, repeatability and temperature effects.

Mechanical characteristics

Angular travel	180°
Connector	Deutsch DTM

Electrical specifications

Working angle	170°
Supply Voltage(Vs)	5.0+/-10% Vdc
Current supply	Max 24.0 mA
Output at FS ²⁾	4.5 V
Zero output ²⁾	0.5 V
Output current	Max. 1.0 mA (each output)

2) The output is ratiometric to supply voltage (Vs)

Ordering part number

RS70	01707
------	-------

Environmental protection**EMI**

ISO 11452-2	150 V/m
-------------	---------

ESD

EN 61000-4-2	7 kV
--------------	------

Mechanical

Shock	1m drop
Vibration	30 Gs

Climate

Sealing	(electronics)
IP66	

Chemical environment

Liquids (resistance)	standard automotive
----------------------	---------------------

**WARNING - USER RESPONSIBILITY**

FAILURE OR IMPROPER SELECTION OR IMPROPER USE OF THE PRODUCTS DESCRIBED HEREIN OR RELATED ITEMS CAN CAUSE DEATH, PERSONAL INJURY AND PROPERTY DAMAGE.

- This document and other information from Parker-Hannifin Corporation, its subsidiaries and authorized distributors provide product or system options for further investigation by users having technical expertise.
- The user, through its own analysis and testing, is solely responsible for making the final selection of the system and components and assuring that all performance, endurance, maintenance, safety and warning requirements of the application are met. The user must analyze all aspects of the application, follow applicable industry standards, and follow the information concerning the product in the current product catalog and in any other materials provided from Parker or its subsidiaries or authorized distributors.
- To the extent that Parker or its subsidiaries or authorized distributors provide component or system options based upon data or specifications provided by the user, the user is responsible for determining that such data and specifications are suitable and sufficient for all applications and reasonably foreseeable uses of the components or systems.

OFFER OF SALE

Please contact your Parker representative for a detailed "Offer of Sale".

Sales Offices Worldwide

North America

Hydraulics Group Headquarters

6035 Parkland Boulevard
Cleveland, OH 44124-4141 USA
Tel: 216-896-3000
Fax: 216-896-4031

Parker Hannifin Canada

Motion & Control Division – Milton

160 Chisholm Drive Milton
Ontario Canada L9T 3G9
Tel: 905-693-3000
Fax: 905-876-1958

Mexico

Parker Hannifin de México

Av eje uno norte num 100
Parque Industrial Toluca 2000
Toluca, Mex C.P. 50100
Tel: 52 722 2754200
Fax: 52 722 2799308

Europe

Europe Hydraulics Group

Parker Hannifin Corporation

Parker House
55 Maylands Avenue
Hemel Hempstead, Herts
HP2 4SJ England
Tel: 44 1442 458000
Fax: 44 1442 458085

Latin America

Brazil

Hydraulics Division

Parker Hannifin Ind. e Com. Ltda

Av. FredericoRitter, 1100
Cachoeirinha RS, 94930-000 Brazil
Tel: 55 51 3470 9144
Fax: 55 51 3470 3100

Mobile Sales

Mobile Sales Organization and Global Sales

595 Schelter Road
Suite 100
Lincolnshire, IL 60069 USA
Tel: 847-821-1500
Fax: 847-821-7600

Industrial Sales

Great Lakes Region

3700 Embassy Parkway
Suite 260
Fairlawn, OH 44333 USA
Tel: 330-670-2680
Fax: 330-670-2681

Southern Region

1225 Old Alpharetta Road
Suite 290
Alpharetta, GA 30005 USA
Tel: 770-619-9767
Fax: 770-619-9806

Chicago Region

1163 E. Ogden Avenue
Suite 705, #358
Naperville, IL 60563 USA
Tel: 630-964-0796
Fax: 866-473-9274

Pacific Region

8460 Kass Drive
Buena Park, CA 90621
Tel: 714-228-2510
Fax: 714-228-2511

Eastern Region

100 Corporate Drive
Lebanon, NJ 08833 USA
Tel: 908-236-4121
Fax: 908-236-4146

Asia Pacific

Asia Pacific Headquarters

Parker Hannifin Hong Kong Ltd

8/F, Kin Yip Plaza
9 Cheung Yee Street
HK-Cheung Sha Wan, Hong Kong
Tel: 852 2428 8008
Fax: 852 2425 6896

Australia Headquarters

Parker Hannifin Pty Ltd.

9 Carrington Road
Castle Hill, NSW 2154, Australia
Tel: 612 9634 7777
Fax: 612 9842 5111

China Headquarters

Parker Hannifin Motion & Control (Shanghai) Co., Ltd

280 Yunqiao Road,
Jin Qiao Export Processing Zone
CN-Shanghai 201206, China
Tel: 86 21 5031 2525
Fax: 86 21 5834 3714

Korea Headquarters

Parker Hannifin Korea Ltd

6F Daehwa Plaza
169 Samsung-dong, Gangnam-gu
KR-Seoul, 135-090, Korea
Tel: 82 2 559 0400
Fax: 82 2 556 8187

South Africa

Parker Hannifin Africa Pty Ltd

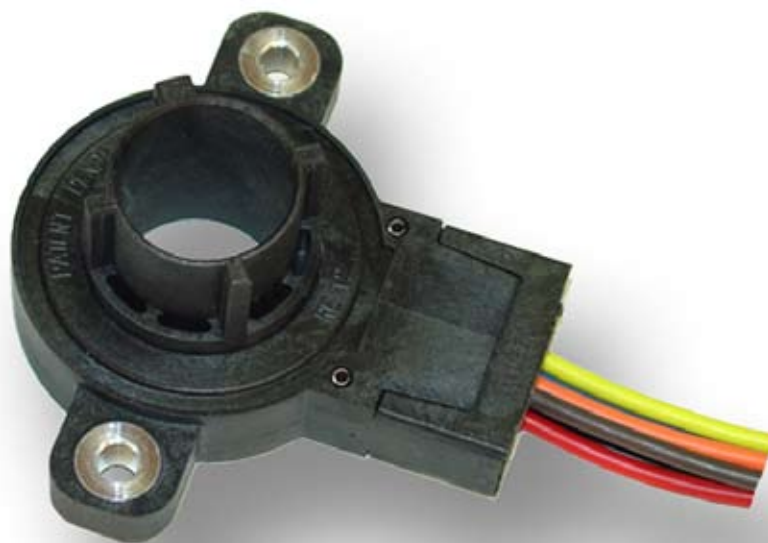
Parker Place

10 Berne Avenue Airport
P.O. Box 1153
ZA-Kempton Park 1620,
Republic of South Africa
Tel: 27 11 961 0700
Fax: 27 11 392 7213





aerospace
climate control
electromechanical
filtration
fluid & gas handling
hydraulics
pneumatics
process control
sealing & shielding



Electronic Control Systems Sensors

RS60 Rotary Sensor



ENGINEERING YOUR SUCCESS.

Application

The RS60 rotary sensor belongs to the Parker family of accessories provided to complement electronic control systems. The RS60 is a 0-5V, dual output, non-contact rotary sensor for mobile hydraulic applications. The sensor has a through-hole coupling and has twelve inch leads with an attached Deutsch connector. To make the sensor suitable for mobile equipment, we have focused upon properties such as reliability, electromagnetic immunity and ease of installation.

Properties

Reliability

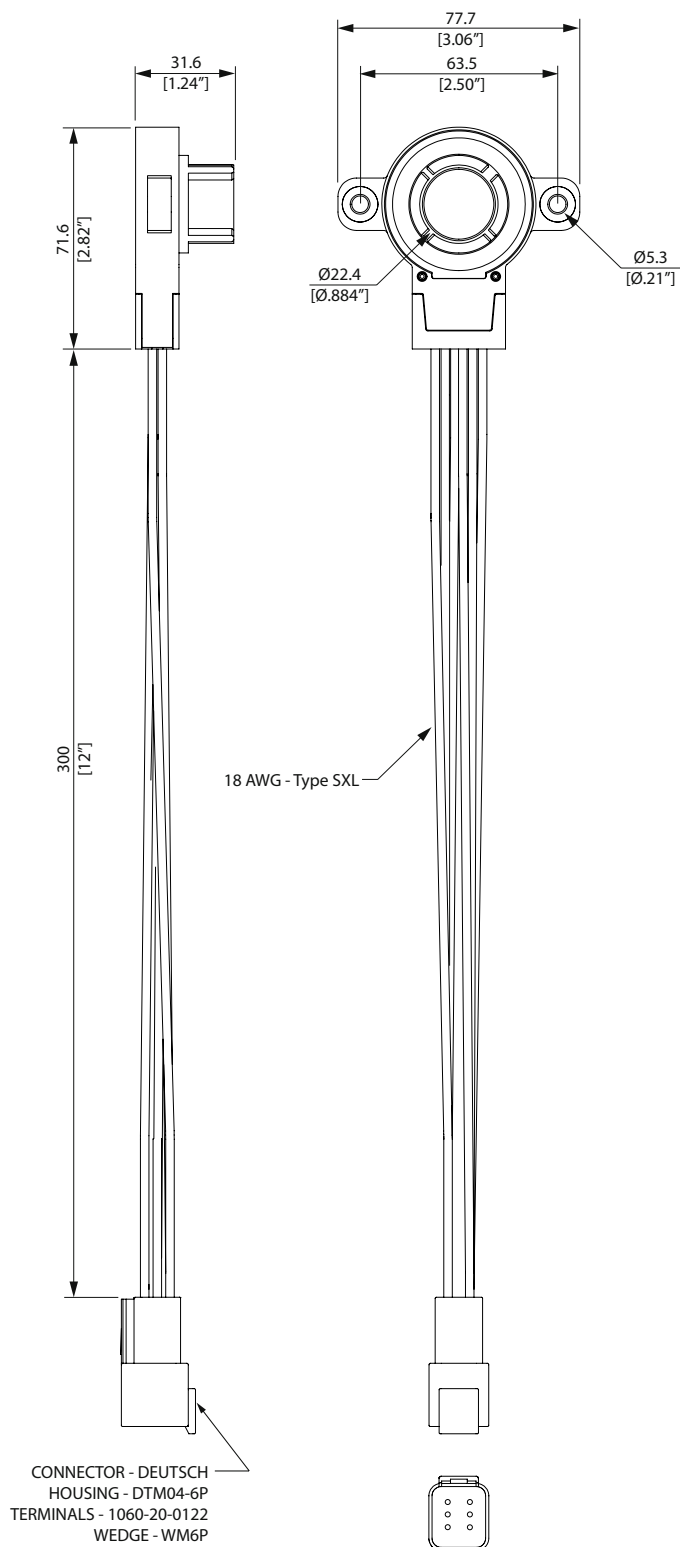
The RS60 has a glass-filled nylon plastic construction for sturdiness and corrosion resistance. The mounting holes are reinforced with aluminum inserts for added strength. The sensor uses non-contact, Hall-effect technology for trouble free operation. The inverted, redundant outputs make this sensor very reliable and add safety. The sensor is very robust and able to withstand rugged applications.

Electromagnetic immunity

The design of the RS60 has a high level of EMI protection.

Installation

The RS60 is well designed for the mobile hydraulics industry. The 6 pin connector is a sealed Deutsch DTM type designed for automotive use. This connector combined with potted electronics gives the sensor IP66 protection for exposed outdoor applications. The mounting holes are extra large for easy alignment. The through-hole coupling allows the flexibility to mount the sensor anywhere along the length of a rotating shaft. These features provide for easy installation and removal, even in field conditions.



General

Weight	118 g
Temperature range	-40°C to 125°C
Operating life	3 million cycles
Total error ($\leq 120^\circ$) ¹⁾	Max 5.0% FS
Hysteresis	3.0% when no shaft end float is allowed

1) Total accuracy includes non-linearity, hysteresis, repeatability and temperature effects.

Mechanical characteristics

Angular travel	120°
Connector	Deutsch DTM

Electrical specifications

Working angle	120°
Supply Voltage(Vs)	5.0+/-10% Vdc
Current supply	Max 12.0 mA
Output at FS ²⁾	4.5 V
Zero output ²⁾	0.5 V
Output current	Max. 1.0 mA (each output)

2) The output is ratiometric to supply voltage (Vs)

Environmental protection**EMI**

ISO 11452-2	150 V/m
-------------	---------

ESD

EN 61000-4-2	3 kV
--------------	------

Mechanical

Shock	1m drop
Vibration	30 Gs

Climate

Sealing (electronics)	IP66
-----------------------	------

Chemical environment

Liquids (resistance)	standard automotive
----------------------	---------------------

Ordering part number

RS60	01708
------	-------

**WARNING - USER RESPONSIBILITY**

FAILURE OR IMPROPER SELECTION OR IMPROPER USE OF THE PRODUCTS DESCRIBED HEREIN OR RELATED ITEMS CAN CAUSE DEATH, PERSONAL INJURY AND PROPERTY DAMAGE.

- This document and other information from Parker-Hannifin Corporation, its subsidiaries and authorized distributors provide product or system options for further investigation by users having technical expertise.
- The user, through its own analysis and testing, is solely responsible for making the final selection of the system and components and assuring that all performance, endurance, maintenance, safety and warning requirements of the application are met. The user must analyze all aspects of the application, follow applicable industry standards, and follow the information concerning the product in the current product catalog and in any other materials provided from Parker or its subsidiaries or authorized distributors.
- To the extent that Parker or its subsidiaries or authorized distributors provide component or system options based upon data or specifications provided by the user, the user is responsible for determining that such data and specifications are suitable and sufficient for all applications and reasonably foreseeable uses of the components or systems.

OFFER OF SALE

Please contact your Parker representative for a detailed "Offer of Sale".

Sales Offices Worldwide

North America

Hydraulics Group Headquarters

6035 Parkland Boulevard
Cleveland, OH 44124-4141 USA
Tel: 216-896-3000
Fax: 216-896-4031

Parker Hannifin Canada

Motion & Control Division – Milton

160 Chisholm Drive Milton
Ontario Canada L9T 3G9
Tel: 905-693-3000
Fax: 905-876-1958

Mexico

Parker Hannifin de México

Av eje uno norte num 100
Parque Industrial Toluca 2000
Toluca, Mex C.P. 50100
Tel: 52 722 2754200
Fax: 52 722 2799308

Europe

Europe Hydraulics Group

Parker Hannifin Corporation

Parker House
55 Maylands Avenue
Hemel Hempstead, Herts
HP2 4SJ England
Tel: 44 1442 458000
Fax: 44 1442 458085

Latin America

Brazil

Hydraulics Division

Parker Hannifin Ind. e Com. Ltda

Av. FredericoRitter, 1100
Cachoeirinha RS, 94930-000 Brazil
Tel: 55 51 3470 9144
Fax: 55 51 3470 3100

Mobile Sales

Mobile Sales Organization and Global Sales

595 Schelter Road
Suite 100
Lincolnshire, IL 60069 USA
Tel: 847-821-1500
Fax: 847-821-7600

Industrial Sales

Great Lakes Region

3700 Embassy Parkway
Suite 260
Fairlawn, OH 44333 USA
Tel: 330-670-2680
Fax: 330-670-2681

Southern Region

1225 Old Alpharetta Road
Suite 290
Alpharetta, GA 30005 USA
Tel: 770-619-9767
Fax: 770-619-9806

Chicago Region

1163 E. Ogden Avenue
Suite 705, #358
Naperville, IL 60563 USA
Tel: 630-964-0796
Fax: 866-473-9274

Pacific Region

8460 Kass Drive
Buena Park, CA 90621
Tel: 714-228-2510
Fax: 714-228-2511

Eastern Region

100 Corporate Drive
Lebanon, NJ 08833 USA
Tel: 908-236-4121
Fax: 908-236-4146

Asia Pacific

Asia Pacific Headquarters

Parker Hannifin Hong Kong Ltd

8/F, Kin Yip Plaza
9 Cheung Yee Street
HK-Cheung Sha Wan, Hong Kong
Tel: 852 2428 8008
Fax: 852 2425 6896

Australia Headquarters

Parker Hannifin Pty Ltd.

9 Carrington Road
Castle Hill, NSW 2154, Australia
Tel: 612 9634 7777
Fax: 612 9842 5111

China Headquarters

Parker Hannifin Motion & Control (Shanghai) Co., Ltd

280 Yunqiao Road,
Jin Qiao Export Processing Zone
CN-Shanghai 201206, China
Tel: 86 21 5031 2525
Fax: 86 21 5834 3714

Korea Headquarters

Parker Hannifin Korea Ltd

6F Daehwa Plaza
169 Samsung-dong, Gangnam-gu
KR-Seoul, 135-090, Korea
Tel: 82 2 559 0400
Fax: 82 2 556 8187

South Africa

Parker Hannifin Africa Pty Ltd

Parker Place

10 Berne Avenue Airport
P.O. Box 1153
ZA-Kempton Park 1620,
Republic of South Africa
Tel: 27 11 961 0700
Fax: 27 11 392 7213



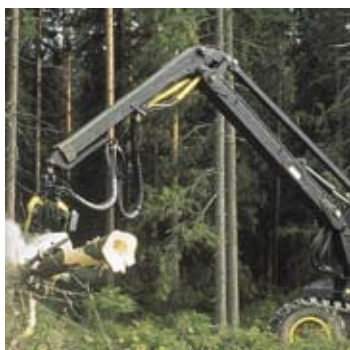
Parker Hannifin Corporation

Hydraulic Valve Division

520 Ternes Avenue
Elyria, Ohio 44035 USA
phone 440 366 5200
fax 440 366 5253
www.parker.com



aerospace
climate control
electromechanical
filtration
fluid & gas handling
hydraulics
pneumatics
process control
sealing & shielding



Electronic Control Systems Sensors

RS52 Rotary Sensor



ENGINEERING YOUR SUCCESS.

Application

The RS52 rotary sensor belongs to the Parker family of accessories provided to complement electronic control systems. The RS52 is a 0-5V output, non-contact, rotary sensor suitable for a variety of applications. The RS52 sensor has a working range of 90 degrees. The sensor has twelve inch leads and an attached Deutsch connector. To make the sensor suitable for mobile equipment, we have focused upon properties such as reliability, electromagnetic immunity and ease of installation.

Properties

Reliability

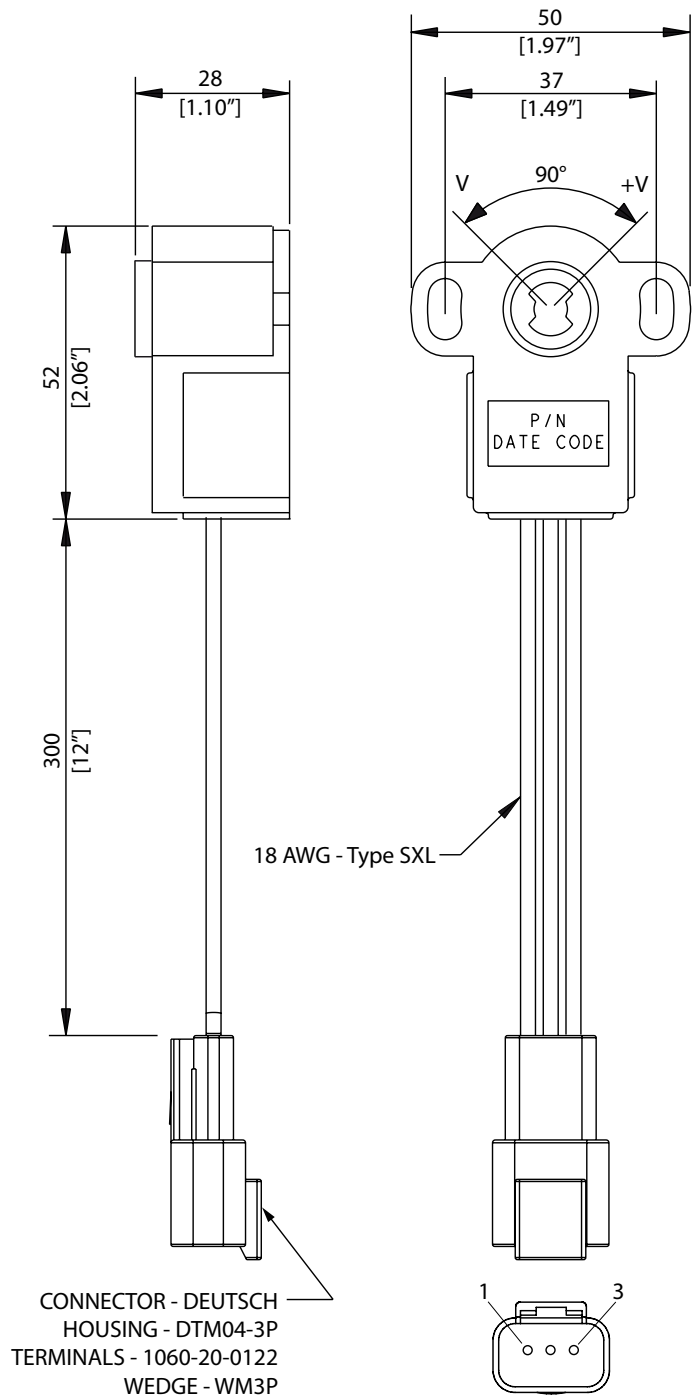
The RS52 has a glass-filled nylon plastic construction for strength and corrosion resistance. The sensor uses non-contact, Hall-effect technology for trouble free operation. The sensor is very robust and able to withstand rugged applications.

Electromagnetic immunity

The design of the RS52 has a high level of EMI protection. The sensor is also over-voltage and reverse polarity protected.

Installation

The RS52 is well designed for the mobile hydraulics industry. The 3 pin connector is a sealed Deutsch DTM type designed for automotive use. This connector, combined with potted electronics, gives the sensor IP66 protection for exposed outdoor applications. The mounting holes are slotted for easy alignment. These features provide for easy installation and removal, even in field conditions.



General

Weight	72 g
Temperature range	-40°C to 125°C
Operating life	10 million cycles
Total error ($\leq 80^\circ$) ¹⁾	Max 3.0 % FS
Hysteresis	1.0% when no shaft end float is allowed

1) Total accuracy includes non-linearity, hysteresis, repeatability and temperature effects.

Mechanical characteristics

Angular travel	110°
Connector	Deutsch DTM

Electrical specifications

Working angle	90°
Supply Voltage(Vs)	5.0+/-10% Vdc
Current supply	Max 12.0 mA
Output at FS ²⁾	4.5 V
Zero output ²⁾	0.5 V
Output current	Max. 1.0 mA

2) The output is ratiometric to supply voltage (Vs)

Ordering part number

RS52	01709
------	-------

Environmental protection**EMI**

ISO 11452-2	150 V/m
ISO 11452-4	100 mA

ESD

EN 61000-4-2	7 kV
--------------	------

Mechanical

Shock	1m drop
Vibration	30 Gs

Climate

Sealing (electronics)	IP66
-----------------------	------

Chemical environment

Liquids (resistance)	standard automotive
----------------------	---------------------

**WARNING - USER RESPONSIBILITY**

FAILURE OR IMPROPER SELECTION OR IMPROPER USE OF THE PRODUCTS DESCRIBED HEREIN OR RELATED ITEMS CAN CAUSE DEATH, PERSONAL INJURY AND PROPERTY DAMAGE.

- This document and other information from Parker-Hannifin Corporation, its subsidiaries and authorized distributors provide product or system options for further investigation by users having technical expertise.
- The user, through its own analysis and testing, is solely responsible for making the final selection of the system and components and assuring that all performance, endurance, maintenance, safety and warning requirements of the application are met. The user must analyze all aspects of the application, follow applicable industry standards, and follow the information concerning the product in the current product catalog and in any other materials provided from Parker or its subsidiaries or authorized distributors.
- To the extent that Parker or its subsidiaries or authorized distributors provide component or system options based upon data or specifications provided by the user, the user is responsible for determining that such data and specifications are suitable and sufficient for all applications and reasonably foreseeable uses of the components or systems.

OFFER OF SALE

Please contact your Parker representative for a detailed "Offer of Sale".

Sales Offices Worldwide

North America

Hydraulics Group Headquarters

6035 Parkland Boulevard
Cleveland, OH 44124-4141 USA
Tel: 216-896-3000
Fax: 216-896-4031

Parker Hannifin Canada

Motion & Control Division – Milton

160 Chisholm Drive Milton
Ontario Canada L9T 3G9
Tel: 905-693-3000
Fax: 905-876-1958

Mexico

Parker Hannifin de México

Av eje uno norte num 100
Parque Industrial Toluca 2000
Toluca, Mex C.P. 50100
Tel: 52 722 2754200
Fax: 52 722 2799308

Europe

Europe Hydraulics Group

Parker Hannifin Corporation

Parker House
55 Maylands Avenue
Hemel Hempstead, Herts
HP2 4SJ England
Tel: 44 1442 458000
Fax: 44 1442 458085

Latin America

Brazil

Hydraulics Division

Parker Hannifin Ind. e Com. Ltda

Av. FredericoRitter, 1100
Cachoeirinha RS, 94930-000 Brazil
Tel: 55 51 3470 9144
Fax: 55 51 3470 3100

Mobile Sales

Mobile Sales Organization and Global Sales

595 Schelter Road
Suite 100
Lincolnshire, IL 60069 USA
Tel: 847-821-1500
Fax: 847-821-7600

Industrial Sales

Great Lakes Region

3700 Embassy Parkway
Suite 260
Fairlawn, OH 44333 USA
Tel: 330-670-2680
Fax: 330-670-2681

Southern Region

1225 Old Alpharetta Road
Suite 290
Alpharetta, GA 30005 USA
Tel: 770-619-9767
Fax: 770-619-9806

Chicago Region

1163 E. Ogden Avenue
Suite 705, #358
Naperville, IL 60563 USA
Tel: 630-964-0796
Fax: 866-473-9274

Pacific Region

8460 Kass Drive
Buena Park, CA 90621
Tel: 714-228-2510
Fax: 714-228-2511

Eastern Region

100 Corporate Drive
Lebanon, NJ 08833 USA
Tel: 908-236-4121
Fax: 908-236-4146

Asia Pacific

Asia Pacific Headquarters

Parker Hannifin Hong Kong Ltd

8/F, Kin Yip Plaza
9 Cheung Yee Street
HK-Cheung Sha Wan, Hong Kong
Tel: 852 2428 8008
Fax: 852 2425 6896

Australia Headquarters

Parker Hannifin Pty Ltd.

9 Carrington Road
Castle Hill, NSW 2154, Australia
Tel: 612 9634 7777
Fax: 612 9842 5111

China Headquarters

Parker Hannifin Motion & Control (Shanghai) Co., Ltd

280 Yunqiao Road,
Jin Qiao Export Processing Zone
CN-Shanghai 201206, China
Tel: 86 21 5031 2525
Fax: 86 21 5834 3714

Korea Headquarters

Parker Hannifin Korea Ltd

6F Daehwa Plaza
169 Samsung-dong, Gangnam-gu
KR-Seoul, 135-090, Korea
Tel: 82 2 559 0400
Fax: 82 2 556 8187

South Africa

Parker Hannifin Africa Pty Ltd

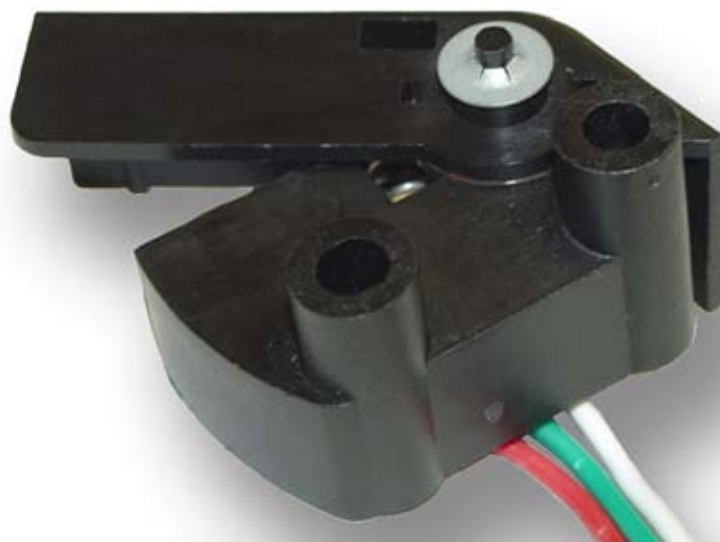
Parker Place

10 Berne Avenue Airport
P.O. Box 1153
ZA-Kempton Park 1620,
Republic of South Africa
Tel: 27 11 961 0700
Fax: 27 11 392 7213





aerospace
climate control
electromechanical
filtration
fluid & gas handling
hydraulics
pneumatics
process control
sealing & shielding



Electronic Control Systems Sensors

ADS50 Linear Sensor



ENGINEERING YOUR SUCCESS.

Application

The ADS50 analog sensor belongs to the Parker family of accessories provided to complement electronic control systems. The ADS50 is a 0-5V output, non-contact, analog sensor for mobile hydraulic applications. The sensor is lever actuated and provides a linear output over 25mm [1.0"] of travel. The ADS50 has twelve inch leads and an attached Deutsch connector. To make the sensor suitable for mobile equipment, we have focused upon properties such as reliability and ease of installation.

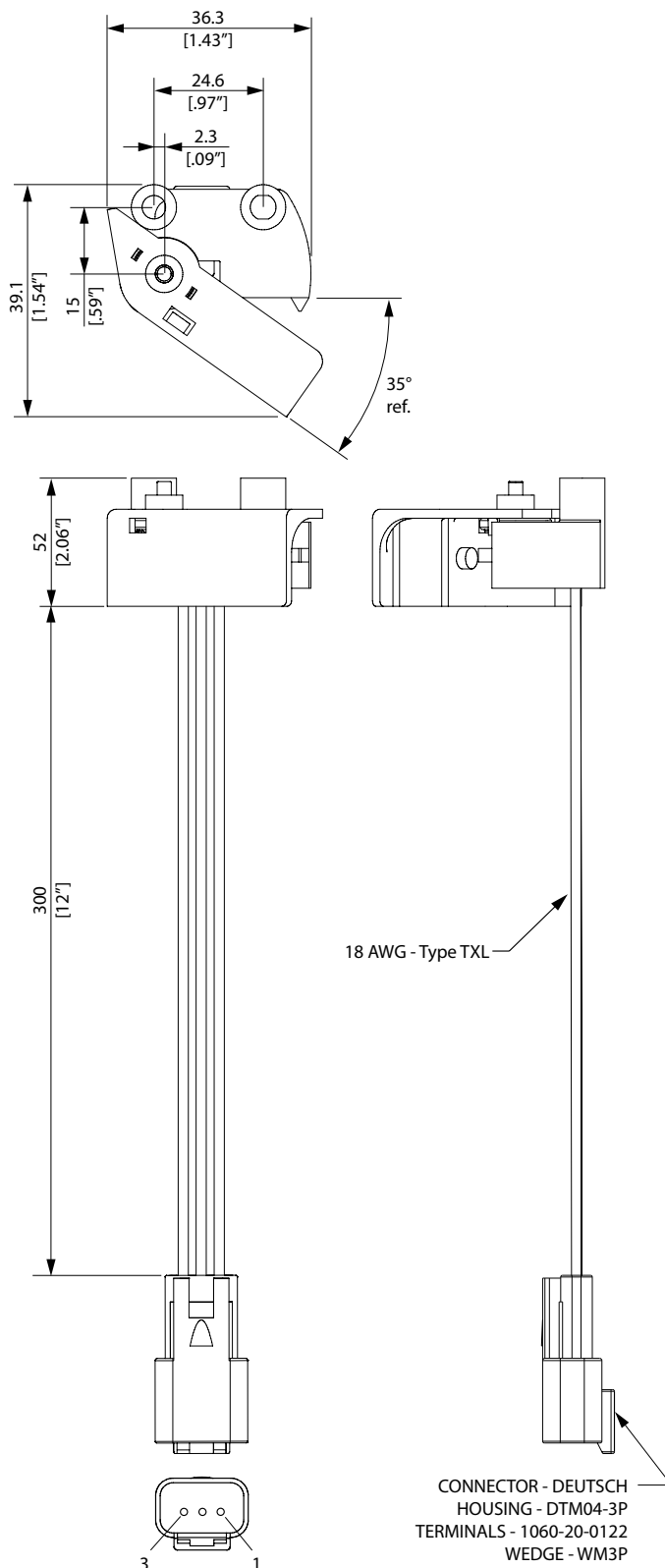
Properties

Reliability

The ADS50 has a glass-filled nylon plastic construction for strength and corrosion resistance. The sensor uses non-contact, Hall-effect technology for trouble free operation. The sensor is very robust and able to withstand rugged applications.

Installation

The ADS50 is well designed for the mobile hydraulics industry. The 3 pin connector is a sealed Deutsch DTM type designed for automotive use. This connector, combined with potted electronics, gives the sensor IP66 protection for exposed outdoor applications. The mounting holes are extra large for easy alignment. These features provide for easy installation and removal, even in field conditions.



General

Weight	39 g
Temperature range	-40°C to 85°C
Operating life	1 million cycles
Linearity	Max $\pm 5.0\%$ FS
Repeatability	$\pm 1.0\%$

Mechanical characteristics

Linear travel	25 mm [1.0"]
Connector	Deutsch DTM

Electrical specifications

Supply Voltage(Vs)	5.0 Vdc
Current supply	Max 12.0 mA
Output fully closed ¹⁾	4.5 V
Output fully open ¹⁾	0.5 V
Output current	Max. 1.0 mA

1) The output is ratiometric to supply voltage (Vs)

Ordering part number

ADS50	01710
-------	-------

Environmental protection

Mechanical

Shock	1m drop
Vibration	30 Gs

Climate

Sealing (electronics)	IP66
-----------------------	------

Chemical environment

Liquids (resistance)	standard automotive
----------------------	---------------------



WARNING - USER RESPONSIBILITY

FAILURE OR IMPROPER SELECTION OR IMPROPER USE OF THE PRODUCTS DESCRIBED HEREIN OR RELATED ITEMS CAN CAUSE DEATH, PERSONAL INJURY AND PROPERTY DAMAGE.

- This document and other information from Parker-Hannifin Corporation, its subsidiaries and authorized distributors provide product or system options for further investigation by users having technical expertise.
- The user, through its own analysis and testing, is solely responsible for making the final selection of the system and components and assuring that all performance, endurance, maintenance, safety and warning requirements of the application are met. The user must analyze all aspects of the application, follow applicable industry standards, and follow the information concerning the product in the current product catalog and in any other materials provided from Parker or its subsidiaries or authorized distributors.
- To the extent that Parker or its subsidiaries or authorized distributors provide component or system options based upon data or specifications provided by the user, the user is responsible for determining that such data and specifications are suitable and sufficient for all applications and reasonably foreseeable uses of the components or systems.

OFFER OF SALE

Please contact your Parker representative for a detailed "Offer of Sale".

Sales Offices Worldwide

North America

Hydraulics Group Headquarters

6035 Parkland Boulevard
Cleveland, OH 44124-4141 USA
Tel: 216-896-3000
Fax: 216-896-4031

Parker Hannifin Canada

Motion & Control Division – Milton

160 Chisholm Drive Milton
Ontario Canada L9T 3G9
Tel: 905-693-3000
Fax: 905-876-1958

Mexico

Parker Hannifin de México

Av eje uno norte num 100
Parque Industrial Toluca 2000
Toluca, Mex C.P. 50100
Tel: 52 722 2754200
Fax: 52 722 2799308

Europe

Europe Hydraulics Group

Parker Hannifin Corporation

Parker House
55 Maylands Avenue
Hemel Hempstead, Herts
HP2 4SJ England
Tel: 44 1442 458000
Fax: 44 1442 458085

Latin America

Brazil

Hydraulics Division

Parker Hannifin Ind. e Com. Ltda

Av. FredericoRitter, 1100
Cachoeirinha RS, 94930-000 Brazil
Tel: 55 51 3470 9144
Fax: 55 51 3470 3100

Mobile Sales

Mobile Sales Organization and Global Sales

595 Schelter Road
Suite 100
Lincolnshire, IL 60069 USA
Tel: 847-821-1500
Fax: 847-821-7600

Industrial Sales

Great Lakes Region

3700 Embassy Parkway
Suite 260
Fairlawn, OH 44333 USA
Tel: 330-670-2680
Fax: 330-670-2681

Southern Region

1225 Old Alpharetta Road
Suite 290
Alpharetta, GA 30005 USA
Tel: 770-619-9767
Fax: 770-619-9806

Chicago Region

1163 E. Ogden Avenue
Suite 705, #358
Naperville, IL 60563 USA
Tel: 630-964-0796
Fax: 866-473-9274

Pacific Region

8460 Kass Drive
Buena Park, CA 90621
Tel: 714-228-2510
Fax: 714-228-2511

Eastern Region

100 Corporate Drive
Lebanon, NJ 08833 USA
Tel: 908-236-4121
Fax: 908-236-4146

Asia Pacific

Asia Pacific Headquarters

Parker Hannifin Hong Kong Ltd

8/F, Kin Yip Plaza
9 Cheung Yee Street
HK-Cheung Sha Wan, Hong Kong
Tel: 852 2428 8008
Fax: 852 2425 6896

Australia Headquarters

Parker Hannifin Pty Ltd.

9 Carrington Road
Castle Hill, NSW 2154, Australia
Tel: 612 9634 7777
Fax: 612 9842 5111

China Headquarters

Parker Hannifin Motion & Control (Shanghai) Co., Ltd

280 Yunqiao Road,
Jin Qiao Export Processing Zone
CN-Shanghai 201206, China
Tel: 86 21 5031 2525
Fax: 86 21 5834 3714

Korea Headquarters

Parker Hannifin Korea Ltd

6F Daehwa Plaza
169 Samsung-dong, Gangnam-gu
KR-Seoul, 135-090, Korea
Tel: 82 2 559 0400
Fax: 82 2 556 8187

South Africa

Parker Hannifin Africa Pty Ltd

Parker Place

10 Berne Avenue Aeroport
P.O. Box 1153
ZA-Kempton Park 1620,
Republic of South Africa
Tel: 27 11 961 0700
Fax: 27 11 392 7213



Parker Hannifin Corporation

Hydraulic Valve Division

520 Ternes Avenue
Elyria, Ohio 44035 USA
phone 440 366 5200
fax 440 366 5253
www.parker.com